



Register of Gas Installers of Ireland
Unit 9, KCR Industrial Estate,
Ravensdale Park, Kimmage,
Dublin 1
T. 01 4997998
F. 01 4929983
Email: installationstandards@rgji.ie

Technical Bulletin

Recalled, Special Interest and Reportable Appliances (revised & re-issued)

September 2014

Contents

Recalled Appliances	3
Flueless Over Sink Water Heaters without ASD (pre 1996)	3
Open Flued Water Heaters in Bathrooms	3
Flueless Hall Heaters without ASD (pre 1996)	4
Special Interest Appliances	5
Open Flued Oil Burner Changeovers (Forced Draft)	5
Open Flued Appliances Using Ridgetile (pre1996)	6
Reportable Appliances	7
Sealed Gas Cooker Grill Compartments	8
Donkin 225 Regulator	9
If you discover one of these regulators during your work please contact BGN on 1850 211 450.	
OARA Gas Master LPG LP	
Single Stage Regulator (cylinder type propane)	10

1. Recalled Appliances

BACKGROUND:

Serious Carbon Monoxide incidents can occur from the incorrect use of the following appliance types. Consequently these appliances have been recalled from installations in use.

1. Flueless Over Sink Water Heaters without A.S.D. (pre 1996)



2. Open Flued Water Heaters in Bathrooms



3. Flueless Hall Heaters without A.S.D. (pre 1996)



Incidents can occur even in circumstances where the appliance was installed in accordance with the installation standards in place at the time of installation.

Flueless appliances discharge all the products of combustion into the room in which they are fitted. A Carbon Monoxide risk occurs where the appliance is left on for an extended period and/or the room has reduced ventilation. In these circumstances the absence of a correctly operating Atmospheric Sensing Device (ASD) can result in the occupants being exposed to Carbon Monoxide.

SAFETY ACTIONS:

The following safety actions must be followed where a Recalled Appliance is discovered in use;

Installers / Service Technicians / Gas Networks Technical staff

If you find a flueless over sink water heater, an open flued water heater in a bathroom or a flueless hall heater without an Atmospheric Sensing Device (ASD) in any premise you visit:

1. **ISOLATE** the appliance for safety. Issue a Notice of Hazard to the owner / occupier of the premise and return a copy of the notice immediately to RGII at the address above.
2. **ADVISE: Most Important:** In all cases advise Bord Gáis Networks immediately giving full details of the appliance isolated and location. Ring 1850 200 694.
3. **ASSESS:** If due to the vulnerable nature of the customer the isolation of the appliance would result in undue hardship for the customer contact BGN for assistance.

Retailers / Installers

These recalled appliance types should **never** be offered to householders.

For either replacement gas appliances or new installations a **room sealed** unit should always be offered as the first choice for safety.

2 Special Interest Appliances

BACKGROUND:

When found, the following require particular attention;

Open Flued Oil Burner Changeover's (Forced Draft)



An Open Flued Boiler originally burning oil that which was converted with a forced draught gas burner for use with Natural Gas i.e. a burner to burner changeover

SAFETY ACTIONS:

The following safety actions must be followed;

1. Identify the appliance and check:
 - Suitability of location
 - Ventilation

- Flue condition and effectiveness

Carry out a flue flow test, a spillage test and a flue gas analyses

Ensure flue is free of corrosion complete throughout its length and all visible joints are sealed and in good condition. Inspect joints and seals at both the boiler and flue/chimney.

2. If the unit is not safely installed **ISOLATE** the appliance. Issue a Notice of Hazard to the owner / occupier and return a copy of the notice immediately to RGII at the address above.
3. If the unit is safely and properly installed advise the user on the safe operation, the need to ensure vents and flues do not become blocked and the **need for annual servicing of the appliance.**
4. Consideration should be given to the fitting of audible CO Alarms at the premise.
5. For replacement of these gas appliances a **room sealed** unit should always be offered as the first choice for safety.

Open Flued Appliance's Using Ridge-tiles (pre1996)



An Open Flued Appliance using a Ridge-tile flue terminal (pre1996)

In most cases this flueing system was originally used for warm air systems and then utilized for another gas appliance

Premises may have an ageing flue and flue terminal arrangement in use with a central heating gas boiler. The flue takes the products of combustion from the boiler via the attic space with a flue terminal normally located on the ridge of the roof. This ridge tile flue arrangement can result in a potential Carbon Monoxide hazard when the appliance and the associated flue are not properly maintained. As this is deemed to be a concealed flue a Carbon Monoxide Alarm shall be fitted in the attic space as per the manufacturer's instructions.

SAFETY ACTIONS:

The following safety actions must be followed;

1. Identify the appliance and check:
 - Suitability of location
 - Ventilation
 - Flue condition and effectiveness
 Carry out a flue flow test and a spillage test

Ensure flue is free of corrosion, complete throughout its length and all visible joints are sealed and in good condition. For this flue configuration this **will require accessing the attic space** to ensure the integrity of the flueing system.

2. If the unit is not safely installed **ISOLATE** the appliance. Issue a Notice of Hazard to the owner / occupier and return a copy of the notice immediately to RGII at the address above.
3. If the unit is safely and properly installed advise the user on the safe operation, the need to ensure vents and flues do not become blocked and the need for annual servicing of the appliance.
4. Consideration should be given to the fitting of audible CO Alarms at the premise.
6. For replacement of these gas appliances connected to a Ridge Tile Flue system a **room sealed** unit should always be offered as the first choice for safety.

3 Reportable Appliances

BACKGROUND:

Sealed Gas Cooker Grill Compartments

For certain models of Beko, Flavel, Leisure and New World gas cookers with a separate oven and grill, operating the grill with the grill compartment door closed can cause potentially fatal levels of carbon monoxide to be produced. At least six deaths in the UK and Ireland can be linked to this issue.

Free safety inspections

A free safety inspection and modification can be arranged by calling the following numbers:

- For Beko, Flavel and Leisure cookers, freephone 1800 25 29 25 (9am-8pm Monday-Friday, 10am-4pm Saturday-Sunday)
- For New World cookers, freephone 1800 569 569 (9am-5pm Monday-Friday)

SAFETY ACTIONS:

1. Check if your cooker is one of the makes / models affected (see list below)
2. Contact the relevant manufacturer helpline numbers, if one of the affected models is identified, to arrange for a free modification.
3. Do not under any circumstances operate the grill with the grill door closed - it must always be in the open position.

4. Advise the customer to always use cookers in accordance with the manufacturer's instructions and do not use them for any purpose other than cooking

Affected models

The models affected are:

Beko models:

- DCG8511WLPG
- DCG8511PLW
- DG581LWP

Flavel models:

- DCGAP5LS
- AP5LDWP
- AP5LDW
- AP5LDSP

Leisure models:

- CM10NRK
- CM10NRC

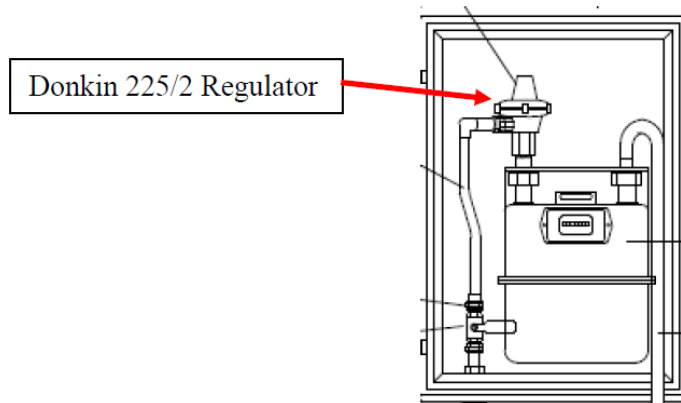
New World models:

- 50TWLM SV LPG
- 50WLM WH LPG
- 50WLM SV LPG
- 50TWLM WH LPG

4. Donkin 225 Regulator

BACKGROUND:

Manufactured and installed on low pressure domestic services up to 1997. Can be located either with or without a meter box. An issue has been identified which requires their removal



SAFETY ACTIONS:

If you discover one of these regulators during your work please contact BGN on

1850 211 540.

With the following information

- House /Address Details
- GPRN
- Meter Number
- Donkin 225/2 serial number (See regulator above).

If you discover a Donkin 255/2 regulator that is leaking gas you must turn off the MCV (Main Control Valve) and call the BGN emergency line on

1850 20 50 50

To ensure a first response fitter can be dispatched to replace the regulator immediately.

Please report even if the regulator is working correctly

5. LPG OARA Gas Master Range Regulator

BACKGROUND:

This model regulator has been found to be prone to failure caused by internal corrosion, resulting in an over pressure condition and should therefore be replaced and removed from service

If you think you have this type of regulator you should contact a Registered Gas Installer (RGI) or your gas supplier to have a safety inspection carried out

SAFETY ACTIONS:

Regulators should be maintained or replaced as specified in the manufacturer instructions, or in the absent of any manufacturer instructions, after 10 years in service.

Regulators designed for outdoor use should be kept at least 500 mm above ground level, to avoid the vent opening becoming blocked. It is very important that regulators are always positioned with vent opening facing in the downwards direction, to avoid ingress and accumulation of water inside the body of the regulator

The Irish LP Gas Association (ILPGA) recommend that existing installations fitted with a single stage regulator without protection, be upgraded and fitted with a regulator with over pressure or excess flow protection, as recommended in Irish Standard I.S. 813:2014 Domestic Gas Installations

